

Member Clubs



Poneke Football Club Inc.
www.ponekerugby.com



Poneke Kilbirnie Softball Club
pksoftball.org.nz



Wellington Darts Association
wellingtondartsassociation.co.nz



Wellington Diving
wellingtondiving.org.nz



SMOG Netball
www.smognetball.org.nz



Wellington South Fencing Club
wellingtonsouthfencingclub.com

hubnews

thehub
toitū pōneke community
and sports centre

NOVEMBER 2021

Let's keep up our vaxx-mentum!

Summer is on the way and the path to a fun classic kiwi summer is clear – Let's Get Our Communities Vaccinated!

This edition of thehub news will be dedicated entirely to ongoing efforts to get our communities vaccinated. We are nearing some very important markers in our ongoing effort to ensure the safety of our team of five million – but we aren't quite over the finish line yet. Let's keep our eye on the prize by continuing to be informed, supportive, kind, and most importantly, vaccinated!

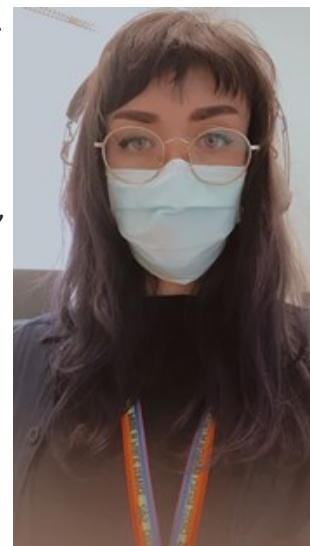
Why was getting vaccinated important to you?

I got vaccinated because as a health worker I want to protect myself and the people I work with from COVID-19 and vaccination is the best way to do that. I have no doubt that Covid 19 will come to our communities and our hospitals sooner or later, and high vaccination levels will strengthen our resilience when this happens. I believe we have not just a personal but also a collective responsibility to get vaccinated.
- **Annabel, she/her, Hospital Administrator**



I got the vaccine because to me it was the right thing to do. I work with vulnerable, often immunocompromised young people and I need to keep them safe. I grew up with a disabled sibling who was extremely vulnerable to illness and often hospitalized. When people say it only affects the elderly/those with pre existing issues' it really hurts to hear, because that is my brother you are talking about. It is our duty as a society to look after our most vulnerable and this is a really easy way to do it. I am also privileged to have studied biology and have good scientific literacy, so I understand how vaccination works and that it poses very little risk, particularly in comparison to the actual pathogen it protects us against. I grew up in a very pro vaccination whānau and had all my jabs growing up, so at the end of the day it was a bit of a no-brainer for me.

- **Lucy, they/them, Intern Psychologist**



Get your vaccine at thehub! You can book online [here](#). and join some of the often 500 people a day getting their vaccines at thehub.

While you're here, check out our spaces, and let us know if you'd like to rent some space for an upcoming gathering by e-mailing toituhub.ops@gmail.com



Some Information about Vaccines at thehub

The vaccine clinic at thehub has delivered 30,000 doses since it got started at the end of July – that’s approximately 2200 doses per week! This makes up roughly 8% of all vaccinations in CCDHB. If we include our off-site vaccinations and the Waikanae Vaccination centre, we have done close to 55,000 doses or approximately 15% of all vaccinations in the CCDHB. Currently Kilbirnie is sitting at 91% with a first dose, and 76% with both doses. One common question is if there is any difference between the two doses – there is not. Both doses are identical.

It is worth reiterating that 1 dose only gives you 30-40% protection however two doses gives up to 90-95% protection. We recommend getting your second dose as soon as you can – the minimum time between doses is 3 weeks. The vaccine clinic at thehub is open from 9am to 4:30pm, and walk ins are acceptable. We have a lift and wheelchair access. If you or someone you know is nervous about the process, please know is perfectly acceptable and encouraged to bring a support person.


Below you will find a summary of the Traffic Light system the government has proposed we will move once DHBs hit vaccination rates of 90%.

New Zealand COVID-19 Protection Framework

Factors for considering a shift between levels: vaccination coverage; capacity of the health and disability system; testing, contact tracing and case management capacity; and the transmission of COVID-19 within the community, including its impact on key populations.

Localised lockdowns: will be used as part of the public health response in the new framework across all levels, and there may still be a need to use wider lockdowns (similar to the measures in Alert Level 3 or 4).

Vaccination certificates: Requiring vaccination certificates will be optional for many locations. There are some higher-risk settings where they will be a requirement in order to open to the public. Some places won't be able to introduce vaccination requirements, to ensure everyone can access basic services, including supermarkets and pharmacies.



	GREEN	ORANGE	RED
<p>COVID-19 across New Zealand, including sporadic imported cases.</p> <p>Limited community transmission.</p> <p>COVID-19 hospitalisations are at a manageable level.</p> <p>Whole of health system is ready to respond – primary care, public health, and hospitals.</p>	<p>General settings</p> <ul style="list-style-type: none"> • Record keeping/scanning required • Face coverings mandatory on flights, encouraged indoors • Public facilities – open <p>No limits if vaccination certificates are used for:</p> <ul style="list-style-type: none"> • Hospitality • Gatherings (e.g. weddings, places of worship, marae) <p>If vaccination certificates are not used, the following restrictions apply:</p> <ul style="list-style-type: none"> • Hospitality – up to 100 people, based on 1m distancing, seated and separated • Gatherings (e.g. weddings, places of worship, marae) – up to 100 people, based on 1m distancing 	<p>General settings</p> <ul style="list-style-type: none"> • Record keeping/scanning required • Face coverings mandatory on flights, public transport, taxis, retail, public venues, encouraged elsewhere <p>No limits if vaccination certificates are used for:</p> <ul style="list-style-type: none"> • Hospitality • Gatherings (e.g. weddings, places of worship, marae) <p>If vaccination certificates are not used, the following restrictions apply:</p> <ul style="list-style-type: none"> • Hospitality – contactless only 	<ul style="list-style-type: none"> • Retail – open • Workplaces – open • Education (schools, ECE, tertiary) – open • Specified outdoor community events – allowed • Gyms • Gyms – up to 100 people, based on 1m distancing
<p>Increasing community transmission with increasing pressure on health system.</p> <p>Whole of health system is focusing resources but can manage – primary care, public health, and hospitals.</p> <p>Increasing risk to at-risk populations.</p>	<p>General settings</p> <ul style="list-style-type: none"> • Record keeping/scanning required • Face coverings mandatory on flights, public transport, taxis, retail, public venues, recommended whenever leaving the house <p>With vaccination certificates, the following restrictions apply:</p> <ul style="list-style-type: none"> • Hospitality – up to 100 people, based on 1m distancing, seated and separated • Gatherings (e.g. weddings, places of worship, marae) – up to 100 people, based on 1m distancing <p>If vaccination certificates are not used, the following restrictions apply:</p> <ul style="list-style-type: none"> • Hospitality – contactless only • Gatherings (e.g. weddings, places of worship, marae) – up to 10 people 	<p>General settings</p> <ul style="list-style-type: none"> • Record keeping/scanning required • Face coverings mandatory on flights, public transport, taxis, retail, public venues, recommended whenever leaving the house <p>With vaccination certificates, the following restrictions apply:</p> <ul style="list-style-type: none"> • Hospitality – up to 100 people, based on 1m distancing, seated and separated • Gatherings (e.g. weddings, places of worship, marae) – up to 100 people, based on 1m distancing <p>If vaccination certificates are not used, the following restrictions apply:</p> <ul style="list-style-type: none"> • Hospitality – contactless only • Gatherings (e.g. weddings, places of worship, marae) – up to 10 people 	<ul style="list-style-type: none"> • Public facilities – open with capacity limits based on 1m distancing • Retail – open with capacity limits based on 1m distancing • Workplaces – working from home encouraged • Workplaces – open • Education – open with public health measures in place • Specified outdoor community events – allowed • Gyms • Close contact businesses, events (indoor/outdoor) and gyms are not able to operate
<p>Action needed to protect health system – system facing unsustainable number of hospitalisations.</p> <p>Action needed to protect at-risk populations.</p>	<p>General settings</p> <ul style="list-style-type: none"> • Record keeping/scanning required • Face coverings mandatory on flights, public transport, taxis, retail, public venues, recommended whenever leaving the house <p>With vaccination certificates, the following restrictions apply:</p> <ul style="list-style-type: none"> • Hospitality – up to 100 people, based on 1m distancing, seated and separated • Gatherings (e.g. weddings, places of worship, marae) – up to 100 people, based on 1m distancing <p>If vaccination certificates are not used, the following restrictions apply:</p> <ul style="list-style-type: none"> • Hospitality – contactless only • Gatherings (e.g. weddings, places of worship, marae) – up to 10 people 	<p>General settings</p> <ul style="list-style-type: none"> • Record keeping/scanning required • Face coverings mandatory on flights, public transport, taxis, retail, public venues, recommended whenever leaving the house <p>With vaccination certificates, the following restrictions apply:</p> <ul style="list-style-type: none"> • Hospitality – up to 100 people, based on 1m distancing, seated and separated • Gatherings (e.g. weddings, places of worship, marae) – up to 100 people, based on 1m distancing <p>If vaccination certificates are not used, the following restrictions apply:</p> <ul style="list-style-type: none"> • Hospitality – contactless only • Gatherings (e.g. weddings, places of worship, marae) – up to 10 people 	<ul style="list-style-type: none"> • Public facilities – open with up to 100 people, based on 1m distancing • Retail – open with capacity limits based on 1m distancing • Workplaces – working from home encouraged • Education – schools and ECE open with public health measures and controls • Specified outdoor community events – allowed with capacity limits • Gyms – up to 100 people, based on 1m distancing • Tertiary education – vaccinations required for onsite delivery, with capacity based on 1m distancing • Close contact businesses, events (indoor/outdoor) and gyms are not able to operate • Tertiary education – distance learning only

Venue for Hire

We have a variety of spaces available for hire from 6am until 10pm, 7 days a week. We cater for meetings, conferences, parties, weddings, functions, training and so much more. Minutes from the airport and city, modern facilities with views over Kilbirnie Park. Spaces can be hired by the hour and there are special rates for community and non-profit organisations. E-mail Rebecca today to enquire at toituhub.ops@gmail.com or visit www.toituponeke.com

